



Homed:In

18 Station Road, Southwater, RH13 9HQ



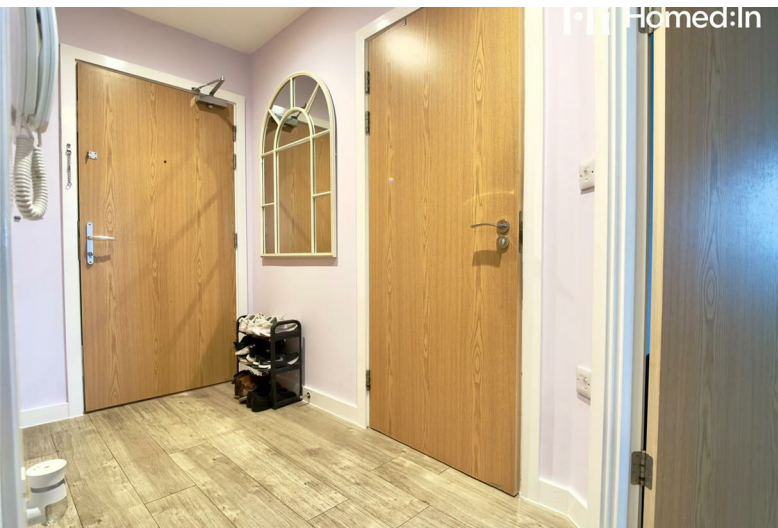
West Green Drive

, Crawley, RH11 7QL

Price Guide £220,000



West Green Drive



Description

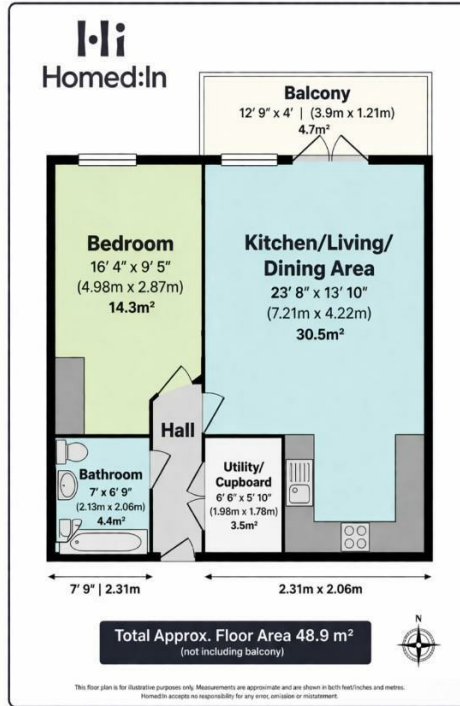
An outstanding example top floor apartment, modern and built to a high standard at every turn. In the heart of bustling Crawling.

- Stunning Premium Modern Top Floor Apartment for Added Quiet
- Covered Dedicated Parking Bay
- Broad Entrance Hallway
- Premium Finishing Throughout
- Balcony with Private Aspect
- Kingsize Bedroom with Tall Ceiling
- Long Lease
- A Must See Example - Enquire Today

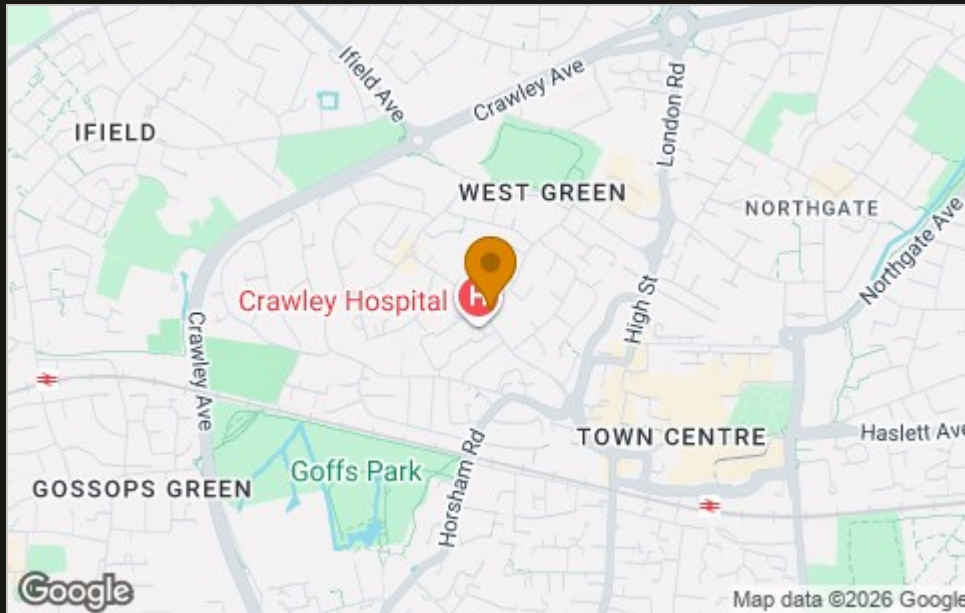




Floor Plan



Area Map



Viewing

Please contact our Horsham Office on 01403 597595 if you wish to arrange a viewing appointment for this property or require further information.

These particulars, whilst believed to be accurate are set out as a general outline only for guidance and do not constitute any part of an offer or contract. Intending purchasers should not rely on them as statements of representation of fact, but must satisfy themselves by inspection or otherwise as to their accuracy. No person in this firm's employment has the authority to make or give any representation or warranty in respect of the property.

To **GET A FREE VALUATION** Call us on: **01403 597595**
or email us at: info@homedin.co.uk

Energy Efficiency Graph

